

Tank Size (All Tanks Are Carbon Steel)

_____ Tank Diameter
 _____ Side Shell Length (Not Tangent-to-Tangent)
 _____ Maximum Overall Height (If Required)

Head Shape

- Flanged & Dished (Standard for Non-Code)
- 2:1 Semi-Elliptical (Standard for ASME Code)

Design Pressure

- 100 PSI 150 PSI Full Vacuum
- 125 PSI Other _____

Code Requirements

- ASME Code Non-Code
- Non-Code with Hydro Test

Tank Lining (Tank Interior)

- Standard Epoxy Prep for Rubber
- Prep for Vinylester Other _____
- NSF Lining Required

Tank Coating (Tank Exterior)

- Standard Primer Urethane
- Standard Epoxy Other _____

Tank Legs & Support Skid [1]

- Strap Legs Jack Saddles
- Angle Legs Jack Saddles with Stands
- Beam Legs Skid – W-Beam
- Pipe Legs Single Double Triple
- Ring Base Skid – Other _____

[1] Strap Legs for Ø42 inch max. tank.
 When Seismic required, Structural Legs will be used.

Seismic Requirements Yes

If yes, complete Seismic Data Request on next page.

Support Clips

- Internal: Qty _____ Carbon Stainless
- External: Qty _____ Carbon Stainless

Special Requirements

- Lift Lugs False Bottom
- Distributor Plate
 - Differential Pressure _____
 - Qty of Holes _____
 - Size of Holes _____

Installation of Customer Supplied Materials

(Must provide detailed prints to be included in quote)

- Internals External Piping & Valves

CRN (Canadian Registration Number) Province _____

American Iron & Steel Act (Federal EPA \$) Yes

Document Package [2] (All ASME Tanks Include U-1A)

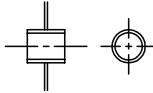
- Level 1 (\$200) Level 3 (\$550)
- Level 2 (\$350) Level 4 (\$750)

[2] Document Package prices shown are for up to three (3) tanks.
 For details, see Document Package Options on next page.

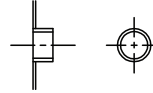
Available Fittings

All Fittings Are Carbon Steel Unless Noted in Schedule of Openings as SS (Stainless Steel).

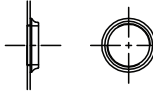
FC (Full Coupling)



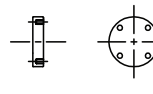
HC (Half Coupling)



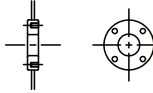
SP (Spud)



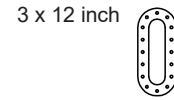
BF (Blind Flange)



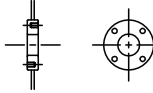
SD (Single Drilled Pad Flange)



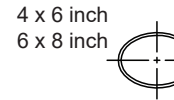
SW (Sight Window)



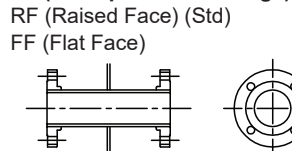
DD (Double Drilled Pad Flange)



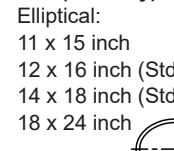
HH (Hand Hole)



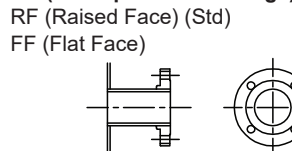
FS (Full Spool ANSI Flange)



MW (Manway)



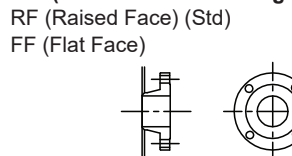
HS (Half Spool ANSI Flange)



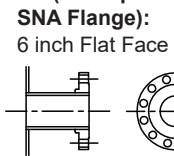
Round (Davited):



WN (Weld Neck ANSI Flange)



SN (Half Spool SNA Flange):



Customer Notes (Include Any In-Shop Inspection Visits)

Company _____

Contact _____

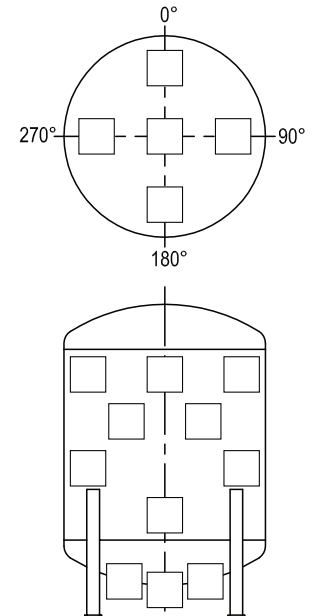
Phone _____ **Fax** _____

Email _____

Quantity _____ Left Hand / Right Hand

Service Type Water Water & Acid Water & Caustic
 Other _____

Show letter (from "Mark" column) in appropriate box for fittings listed in "Schedule of Openings." Location in head or shell is important (exact position is not).



Price Ea. \$ _____

Skid/Wrap Ea. \$ _____

Weight Ea. _____

Ship _____ Weeks After Drawing Approval

Schedule of Openings

Mark	Type*	Size	Service
A			
B			
C			
D			
E			
F			
G			
H			

* Add "SS" for Stainless Steel. Example: MWSS = Manway Stainless Steel



Safe Water Technologies, Inc.

996 Bluff City Blvd, Elgin, IL 60120 USA
 847-888-6900 | www.swtwater.com

SEISMIC DATA REQUEST

Company _____ PO# _____ PO Date _____

Contact _____ SO# _____ Model # _____

A. Existing Information: Please forward any information provided by the end user.

B. Installation Location: United States Canada Other Country

Complete Section C for ALL installation locations. If installed in Other Country, complete Sections C & D.

C. For ALL Installation Locations:

1. Installation Address _____

City/Town _____ State/Prov. _____ Zip/Postal Code _____

2. Facility Type (check below or fill in other) Other _____

Occupancy Category III

Buildings with capacity above 250

Daycare with capacity above 150

Jail or Detention Facility

Municipal Water / Sewage Treatment

Telecommunication Center

Manufacture or Storage of Chemicals
or Hazardous Materials in Quantities
that would put Public at Risk if Released

Occupancy Category IV

Hospital & Other Health Care

Emergency—Fire, Rescue, Police

Emergency Shelters

Emergency Comms/Ops Centers

Aviation Control Towers

Areas Critical to National Defense

Chemicals of Very High Hazard

3. Special regulations applicable to facility (example: California OSHPD, DOD)

4. Will the vessel(s) be bolted direct to concrete? Yes No

NOTE: If bolted to a skid NOT provided by SWT, only structural calculations for vessel legs will be provided (no anchor calculations).

Calculations for vessel or skid anchors to concrete require data for concrete:

Thickness: _____ inches

Strength: 4,000 psi or _____ psi

D. For Installations Located in Other Countries:

1. Is it permissible to use the International Building Code (IBC)? Yes No

If yes, provide seismic acceleration values Ss and S1:

Ss: _____ xg S1: _____ xg (NOTE: 1.15xg = seismic acceleration is 115% of gravity)

2. If not IBC, is there a different seismic code required? Yes No

If yes, can the end user provide the seismic calculations? Yes No

ASME DOCUMENT PACKAGE OPTIONS FOR STEEL TANKS

U-1A is included with all ASME Tanks

Level 1

As-Built Drawings

Material Test Report (MTR) for Head & Shell

Level 2

Level 1 Items

Weld Details

Weld Procedures

Welding Procedure Specification (WPS)

Procedure Qualification Record (PQR)

Paint Reports

Holiday Free

Mil Thickness

Level 3

Level 2 Items

ASME Calculations

Weld Map

Welders Quality Log

Nameplate Image

Non Destructive Examination (NDE) Reports

Level 4

Level 3 Items

Material Test Report (MTR) for All

Pressure Boundry Parts



Safe Water Technologies, Inc.

996 Bluff City Blvd, Elgin, IL 60120 USA
847-888-6900 | www.swtwater.com